

Technical Bulletin

DESCRIPTION / FEATURES:

FLOOR MEDICS INTENSIVE GROUT & TILE CLEANER

Is a concentrated cleaner and degreaser, which can effectively removes grease, soap scum, body oil, mildew stains and algae from areas that have been subjected to heavy use. It is specially formulated to strip off synthetic and acrylic waxes and floor finishes.

■ **USES:**

Recommended for use on Tiles and Natural stone (such as granite, limestone, slate, and travertine), ceramic, porcelain, quarry, saltillo, terracotta, cement pavers, masonry surfaces, linoleum, or resilient flooring.

■ **AVAILABLE SIZES:**

Intensive Grout & Tile Cleaner is available in 1 Litre or 5 Litres / bottle.

■ **METHOD OF APPLICATION:**

Read entire label before using

TEST A SMALL AREA, according to application instruction to determine desired results.

Procedure:

1. Sweep, vacuum or dust mop the Stone or Tile Surface.
2. Dilute Intensive Grout & Tile Cleaner as follows: **LIGHT SOIL BUILD-UP:** Mix 1 part cleaner to 5 parts water. **MODERATE SOIL BUILD-UP:** Mix 1 part cleaner to 3 parts water. **STRIPPING OR HEAVY SOIL BUILD-UP:** Mix 1 part cleaner to 2 parts water.
3. Apply solution to surface with mop or sponge.
4. Allow to dwell 3 to 5 minutes for cleaning, or 5 to 10 minutes when stripping waxes or finishes.
5. Agitate with synthetic mop, scrub brush, or scrub machine. Do not allow solution to dry on surface.
6. Mop up dirty solution.
7. Rinse thoroughly with clean water.

■ **COVERAGE:**

Approximately 150 to 600 sq. ft. (15 m² to 55 m²) per gallon (3.785 L) depending on dilution.

■ **HANDLING AND STORAGE:**

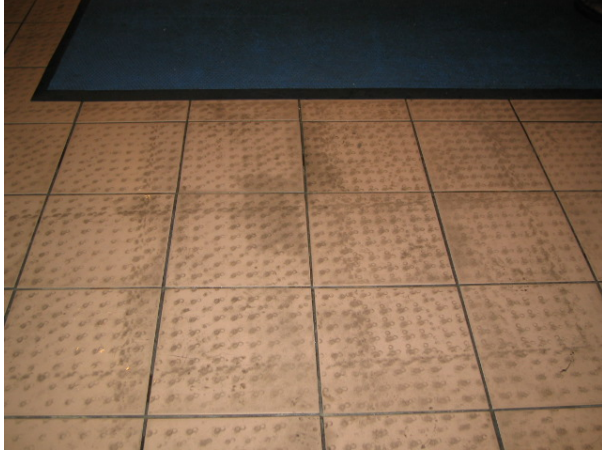
- Close container after each use.
- Store in original container only.
- Unused, Store product is freeze-thaw stable.

▲ **CAUTION:**

- **KEEP OUT OF REACH OF CHILDREN.** Do not take internally.
- Rubber Gloves and eye protection should be worn during application.
- **INHALATION:** Move to fresh air. **IF INGESTED:** Do not induce vomiting. Drink 1 to 2 glasses of water. Seek immediate medical attention.
- **EYE CONTACT:** Flush thoroughly with water for 15 minutes. If irritation persists, seek medical attention.
- **SKIN CONTACT:** Wash skin with soap and water. Remove contaminated clothing



Before



After



Copy right of Floor Medics